

LOT FOR SALE

*Smelser, Wisconsin
• Grant County •*

6.49± Acres

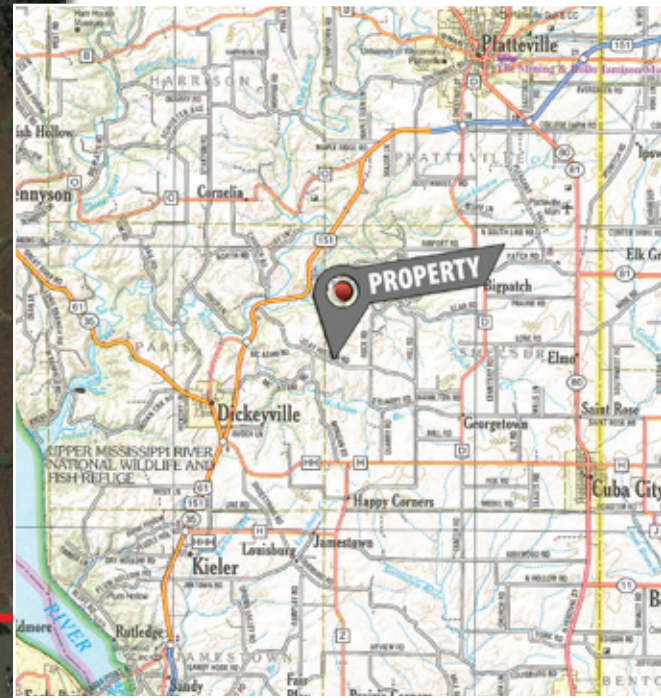
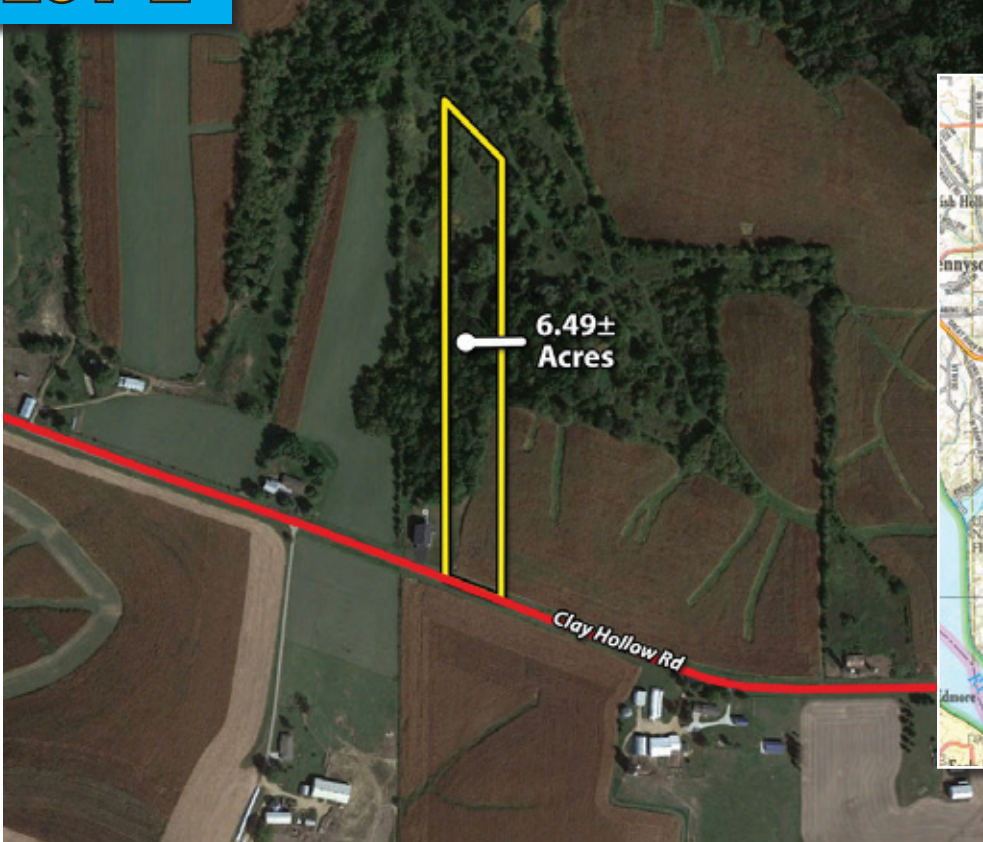
**PRICE:
\$139,500**

- 2.5 miles from Highway 151
- 10 miles to Platteville
- 14 miles to Dubuque

Enjoy owning your own 6.49± acre lot with quick access to Highway 151. Situated just 14 miles from Dubuque, 10 miles from Platteville and 5 miles from Dickyville on Clay Hollow Road, it's hard to find a more central location for your future home. While your home can sit just off of the blacktop road, you can spend most of your time out back enjoying hunting and the wildlife as this lot offers over 4.5± acres of woods/recreational land. With a clear view of the Platteville M, customize a home and get ready to enjoy country style living. And the Village Bar Supper Club is only 10 minutes away, meaning you won't be far from a good night out with friends and family.

LOT 2

Parcel # 054-00456-0020



The information on this sheet is subject to verification and no liability for errors or omissions is assumed by the Schrader Agency.

LAZARUS - CH08G-WI

 **SCHRADER**
Real Estate and Auction Company, Inc.

800-451-2709
schraderauction.com/listings

Listing Agent:
CHRIS HOFFMAN
608-885-0005 • chris@schraderauction.com