



**LIVE INTERNET BIDDING**  
Visit [SchraderAuction.com](http://SchraderAuction.com) for Details  
or call 800-451-2709

**SCHRADER**  
Real Estate and Auction Company, Inc.  
800-451-2709  
[schraderauction.com](http://schraderauction.com)

- TRACTORS
- TRUCKS & TRAILERS
- PLANTING CROP CARE
- TILLAGE
- HARVEST EQUIP.
- FARM RELATED ITEMS

**AUCTION LOCATION:**  
13216 White Pine Hwy.  
Morenci, MI 49256

# WOOD FARMS FARM EQUIPMENT AUCTION

MORENCI, MI



SATURDAY, FEBRUARY 29TH @ 10AM



- TRACTORS
- TRUCKS & TRAILERS
- PLANTING CROP CARE
- TILLAGE
- HARVEST EQUIP.
- FARM RELATED ITEMS

SATURDAY, FEBRUARY 29TH @ 10AM



# WOOD FARMS FARM EQUIPMENT AUCTION

MORENCI, MI

**AUCTION LOCATION:**  
13216 White Pine Hwy.  
Morenci, MI 49256



**LIVE INTERNET BIDDING**  
Visit [SchraderAuction.com](http://SchraderAuction.com) for Details  
or call 800-451-2709.

Excellent Line of Well Maintained  
Equipment! Be on time!  
Approx. 20 min. for small items.

**SCHRADER** Real Estate and Auction Company, Inc. **800-451-2709**  
[schraderauction.com](http://schraderauction.com)

## SchraderAuction.com

*TERMS & CONDITIONS:*  
Cash or Check w/proper ID. 4% convenience fee for credit cards.  
Announcements made the day of the auction take precedence  
over any printed material. Not responsible for accidents.

Follow us on:  
Facebook, Twitter, YouTube, and the Schrader Auction App.

LUNCH PROVIDED BY  
**Scott's Pig Roast**

FEBRUARY						
Sun	Mon	Tue	Wed	Thu	Fri	Sat
23	24	25	26	27	28	29
16	17	18	19	20	21	22
9	10	11	12	13	14	15
2	3	4	5	6	7	8
1						



**SCHRADER** Real Estate and Auction Company, Inc.  
P.O. Box 508, 950 N. Liberty Drive  
Columbia City, IN 46725  
Ed Boyer: 574-215-7653  
Ted Boyer: 574-215-8100  
#6505397356, #AU10800060  
**260-244-7606 • 800-451-2709**

1st Class Mail  
U.S. Postage  
**PAID**  
Columbia City, IN  
PERMIT #260

RETURN SERVICE REQUESTED

# WOOD FARMS FARM EQUIPMENT AUCTION

MORENCI, MI

SATURDAY, FEBRUARY 29TH @ 10AM



SATURDAY, FEBRUARY 29TH @ 10AM



# WOOD FARMS FARM EQUIPMENT AUCTION

MORENCI, MI

- TRACTORS
- TRUCKS & TRAILERS
- PLANTING CROP CARE
- TILLAGE
- HARVEST EQUIP.
- FARM RELATED ITEMS

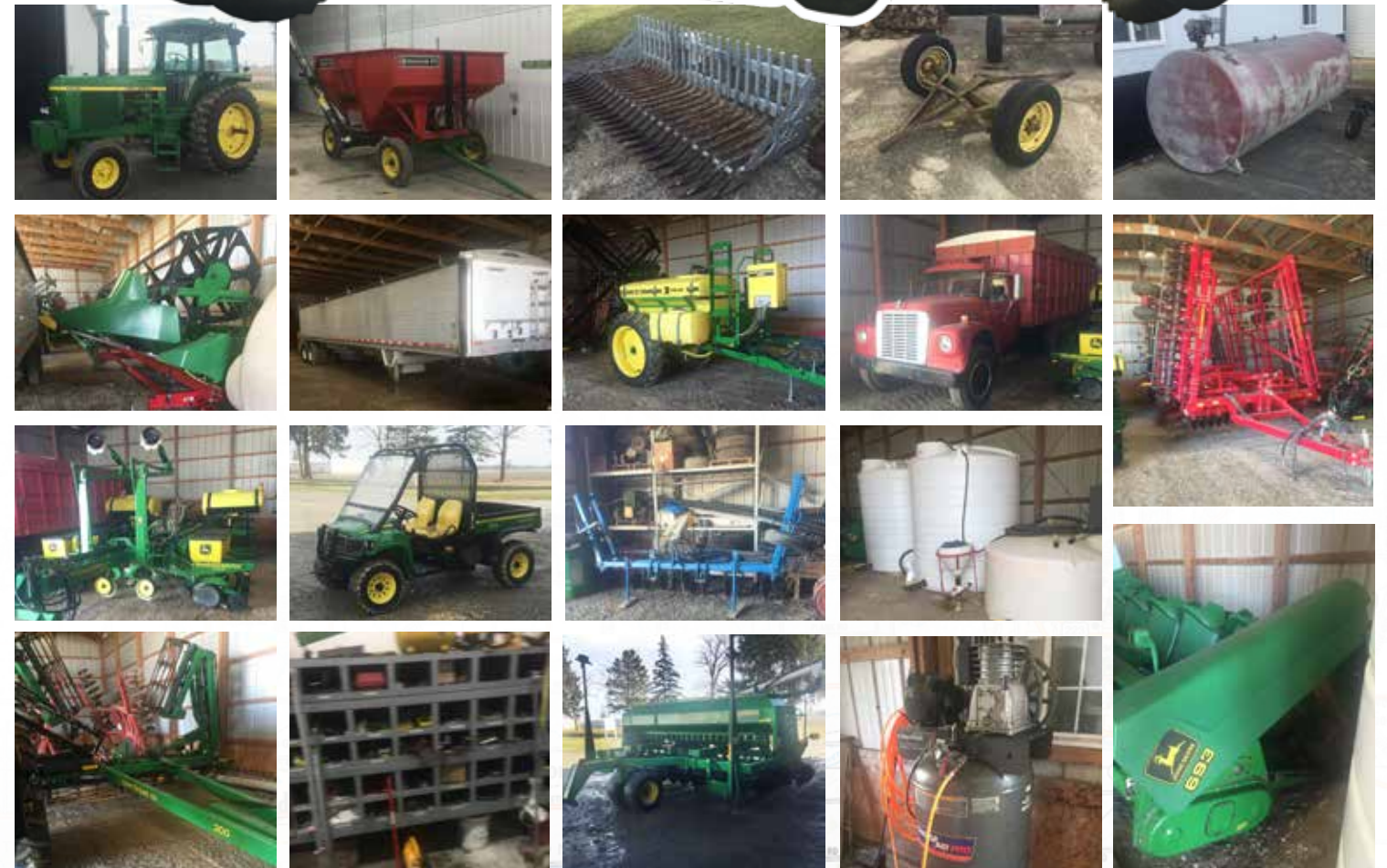


INSPECTION DATE: Friday,  
Feb. 28 - 10:00am to 2:00pm

**AUCTION LOCATION:** 13216 White Pine Hwy. Morenci, MI 49256

**AUCTION DIRECTIONS:** West of Morenci MI Approx. 2.5 Miles on Morenci Rd. OR East of US 127 on Morenci Rd. approx. 5.5 Miles to White Pine Hwy. (Dirt Rd.) go north to first farm.

**AUCTIONEERS NOTE:** Excellent Line of Well Maintained Equip. be on time approx. 20 min. small items



## TRACTORS • TRUCKS • TRAILERS

## HARVEST EQUIPMENT

- **1999 JD 9200 4x4**, 24 Sp. Hi-Lo, 620/70R42 Duals, 3Pt. Coupler, 4 Remote, 4 Wheel Wts. 3130 Hrs. S# H020019
- **1973 JD 4430**, SG, QR, 480/80R38, 540/1000, 3Pt. Coupler, 2 Remote, Air Seat, E\_Z Step, 8 SC Wts. Shows 2668 Hrs. S# 008454
- **1992 Ford LTL 9000 Aeromax**, Semi. 3406 Cat. 9Sp. Tandem Axle, 11R22.5, Air Ride, 462414 Miles
- **1962 IH 1800 Loadstar Grain Truck**, Tandem Axle, V-8 Gas, 5Sp. 2Sp. 20' Box, Hoist, Roll Tarp, Shows 12907 Miles
- **1999 Wilson Pace Setter Alum. Hopper Bottom**, 43' 11R24.5, Alum Wheels, New Suspension, Roll Tarp, 2 Ladders
- **1984 Wilson Drop Deck Trailer**, Tandem Axle, 10R17.5, 40' Out Side Frame, Steel Floor, Beaver Tail, Ramps

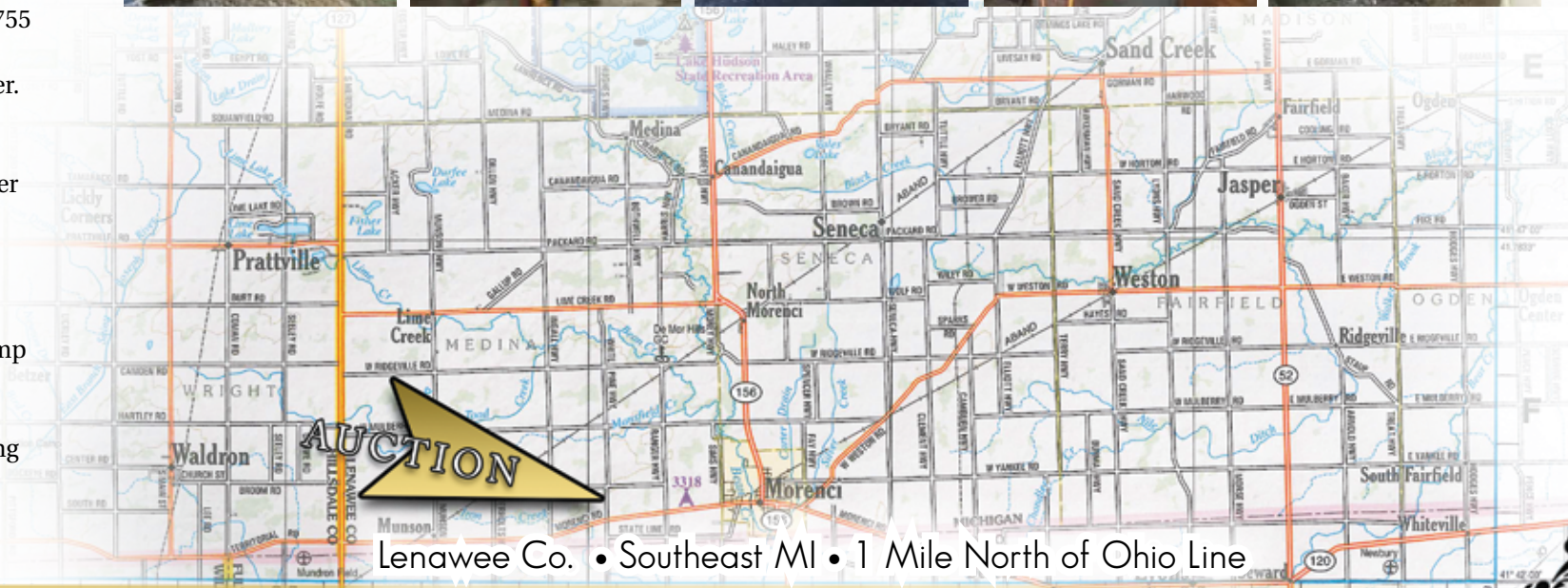
- **2001 JD 9550 Walker Combine**, RWA, 18.4R38 Duals, Green Star Ready, Chopper, The Spreader, Maurer Ext. 3288 Eng. Hrs. 2142 Sep. Hrs, Extra Lights, Extra Nice, S# H09550W690889
- **JD 925F Flex Head**, 25' SS Floor, Full Finger Auger, S# H00925F691027
- **JD 693 Corn Head**, 6X30, Poly, S# H000693X660542
- **Unverferth HT 30 Header Cart**
- **Unverferth 5000 Grain Cart**, Scales, Cameras, 23.1-26 Tires
- **Parker 2000 GW**, JD Running Gear, 20" Wheels
- **J&M 250-7 GW**, J&M Running Gear, Adj. Tongue

## PLANTING CROP CARE & TILLAGE

## FARM RELATED

- **JD 1770 Conservation Planter**, 12X30, MaxEmerge Plus VacuMeter Units, Trash Movers, Seed Firmers, Liq. Fert. Piston Pump, Single Disk Fert. Red Ball, Monitor
- **JD 1560 No-Till Drill**, 15' Caster Wheels, Float Tires, Markers, 7.5 Spacing, Auger Fill, 10 SC Wts. S# X682888
- **JD BB 246 Grain Drill**, Double Disk 24-6" Spacing, Grass Seed Att. 20" Wheels, JD Cyl.
- **2005 Top Air TA 550 Sprayer**, 60' Boom, Adj. Axle, 13.6-38 Tires Mark Master 2500 Foamer, Raven 444
- **Blue NH3 App. 9 Shank**, 3Pt. Cover Disks, Gauge Wheels, Hyd. Fold, Rear Hitch
- **Hitch Doc Mfg. HSC 2000 Travi Seed Cart**, double Box, Tandem Axle, Rear Hitch, S# HSC2917
- **Unverferth 275 Gravity Wagon**, 275 Bu. Seed Wagon, Brush Auger plus SS Auger, JD Running Gear, Green 3Pt. Waca Track
- **JD 512 Disk Ripper**, 17'6" 7 Shank, Level Hitch, Walking Axle, Hyd. Rear Fold, Scrapers
- **SUNFLOWER Agco 6333 Soil Finisher**, 30' Disk, Rolling Basket, Cushion Teeth, 6 Bar Tine Att. Rear Hitch, Lights
- **JD 200 Crumbler**, 32' Hyd. Fold, Lights
- **MF 820 Wheel Disk**, 23' Hyd. Fold, 9' Spacing, 8 Wheels, Rear Hitch
- **JD 950 Roller Harrow**, 15' Crowfoot front, Solid Rear, JD Cyl.
- **2-2500 Gal. Poly Tanks**, Stored Inside
- **3-1000 Gal. Poly Tanks**
- **Inductor-- Transfer Pump**

- **JD XUV Gator IRS**, 4X4, Grill Gard, Cage, Wind Shield, Front Hitch, 755 Hrs.
- **6.5 Hp. 80 gal.**, Air Compressor Ver. w/ Hose
- **MDS Rock Bucket 8'**
- **JD Post Hole Auger**, 3pt. 12" Auger
- **WindPower Portable Generator**, PTO
- **500 Gal. Fuel Wagon**, Electric Pump, JD Running Gear
- **1000 Gal. Fuel Tank**, Electric Pump
- **JD 110 Garden Tractor Fender Style**, 38 Mower, Needs Restored
- **JD #8 Sickle Mower 7'**, JD Running Gear less Reach, 24"x52" Lawn Roller, Lawn Sweeper, Parts Supplies, Misc. Items



Lenawee Co. • Southeast MI • 1 Mile North of Ohio Line

OWNER: TEROLD "Woody" WOOD Estate • Mike Wood • Ph. 517 605 2454

SALE MANAGERS: • Ted Boyer: 574-215-8100 • Ed Boyer: 574-215-7653 ed@boyerpig.net

[schraderauction.com](http://schraderauction.com)

800-451-2709

**SCHRADER**  
Real Estate and Auction Company, Inc.